

USB3.0 Data Guardian Recovery Tool User Manual



Feb. 22, 2012

Ver. 0.1.2

Introduction

A. Notice

B. Open the File

C. Use the Recovery Tool

D. Use the AP Tool

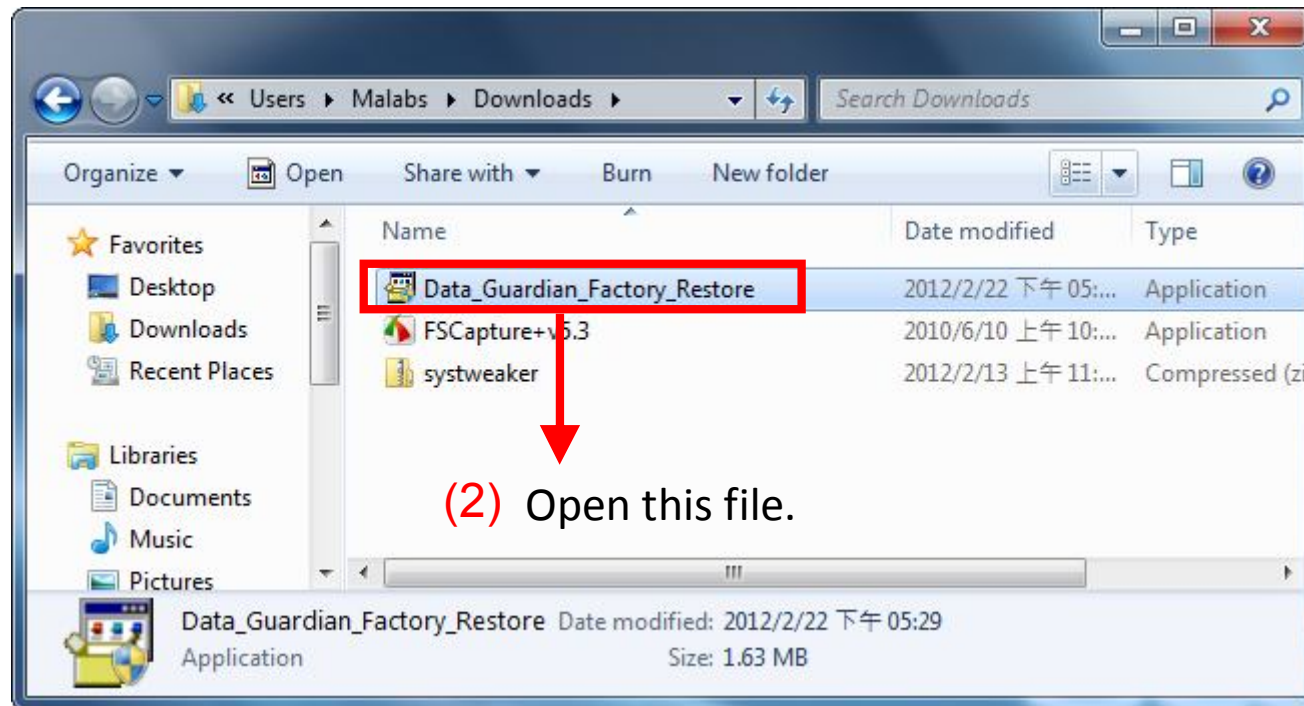
E. Initial Process

A. Notice

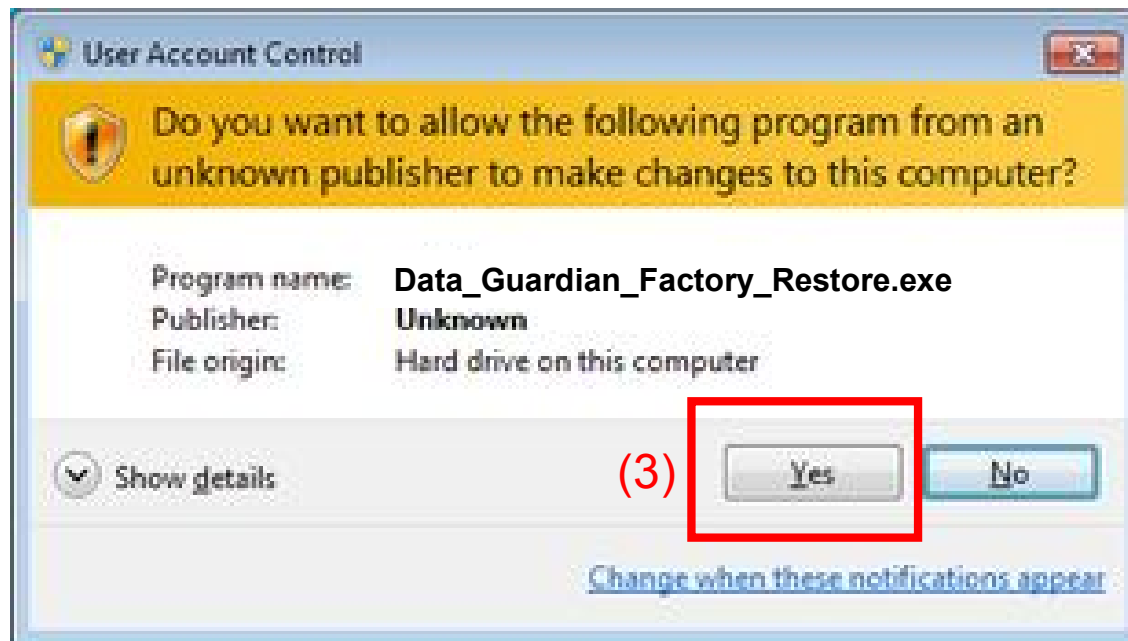
1. The Recovery Tool is only used when USB3.0 Data Guardian is **malfunction** or when **password is forgotten**.
2. Please **do not** use this tool when USB3.0 Data Guardian is functionally well.
3. All Data would be **ERASED**! Please Noted.

B. Open the file

- (1). Go to download folder.
- (2). Open file, Data_Guardian_Factory_Restore.exe



- In Windows 7 / Vista, you would allow UAC to execute this application.
- (3). UAC protect, please click [Yes].



- Please **insert** your USB3.0 Data Guardian **FIRST!**
- **(4)**. Click [Yes] to execute Recovery Tool.



C. Run the Recovery Tool

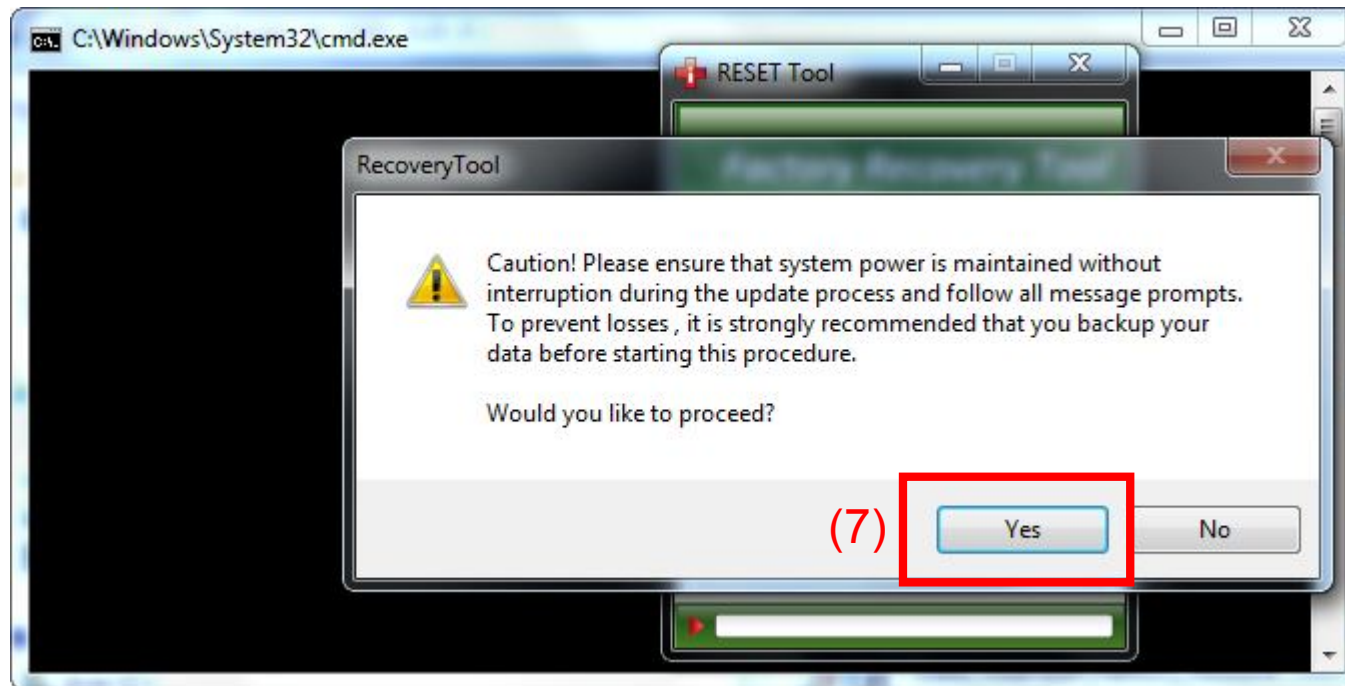
(5). Select the Drive Letter.

(6). Click [Start].

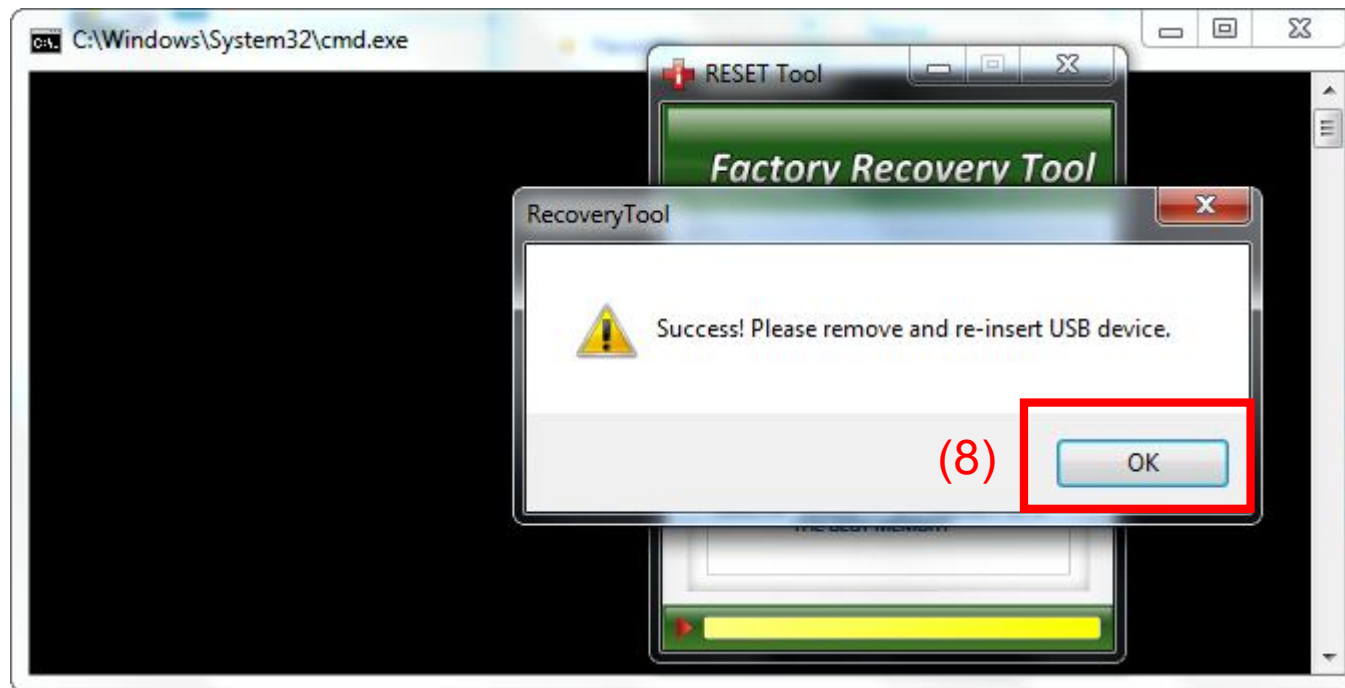


↓
Please do not close the black one. It will close by itself.

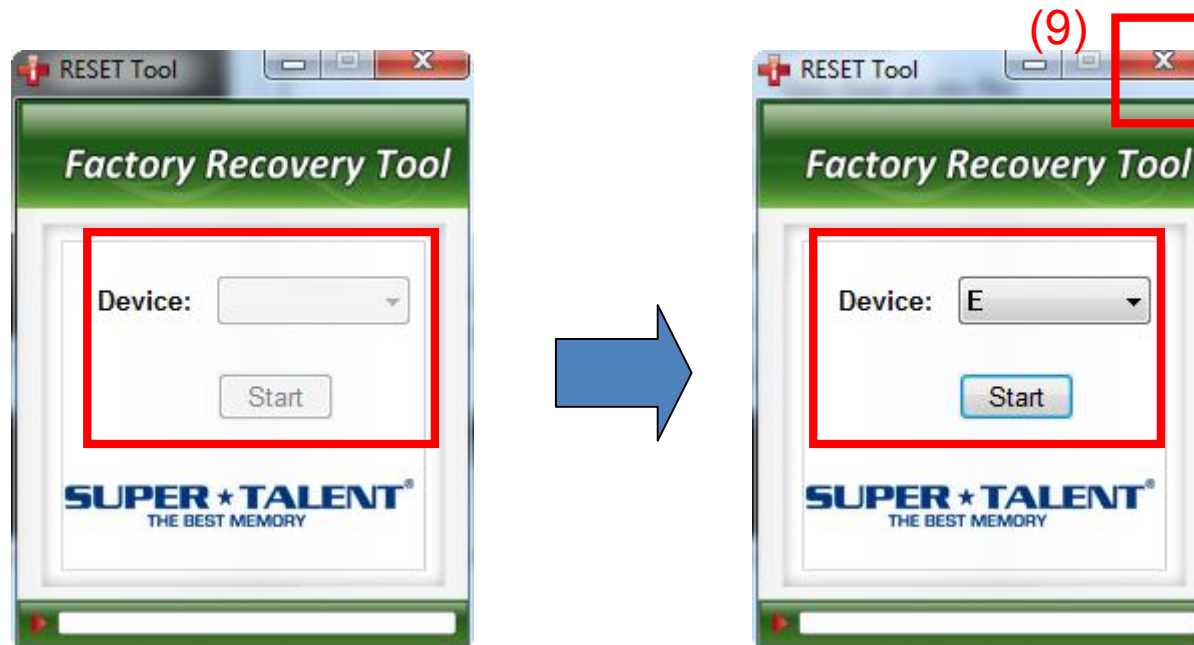
- Please read carefully, the drive data would be erased.
- (7). Click [Yes] and continue.



(8). If Success, then click [OK] and go to next step.
If fail or else situation, please check page 15 FAQ.

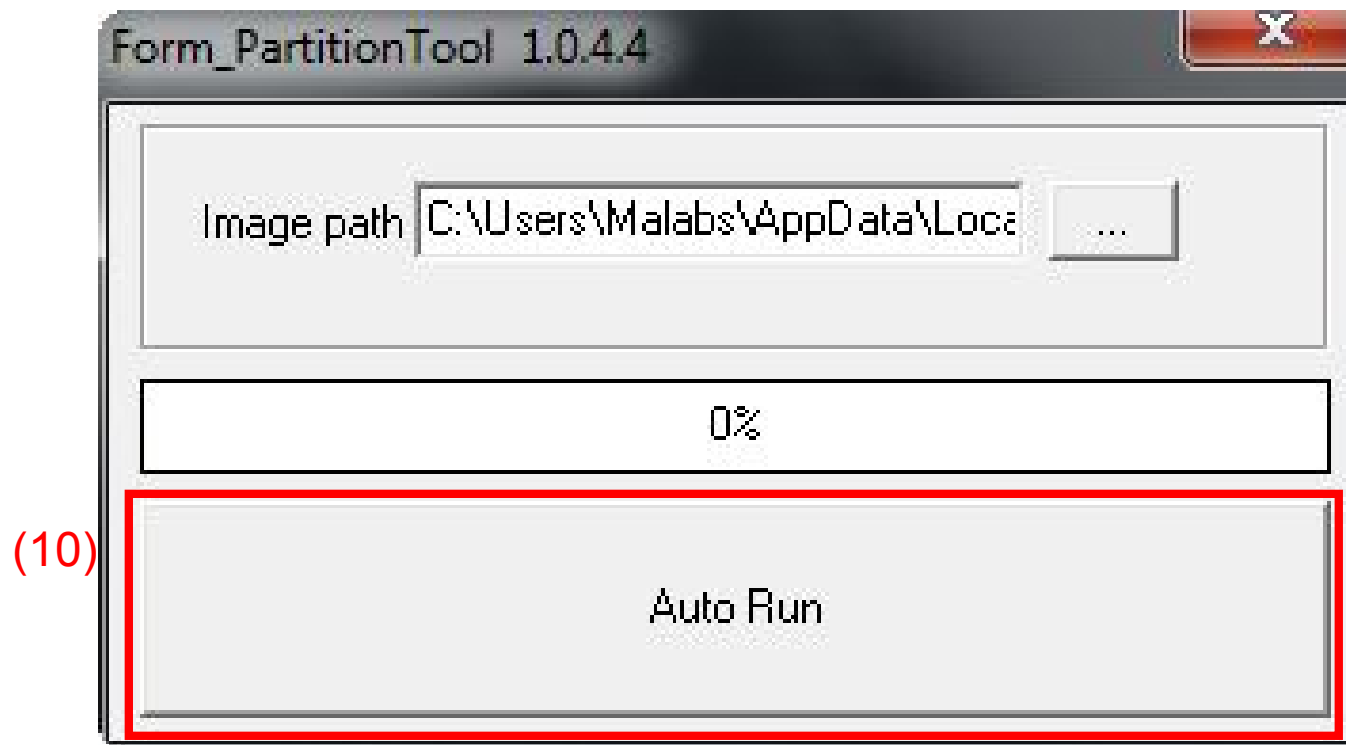


- Please re-insert USB drive. The Screen would be like below.
- (9). Wait the [RESET Tool] can detect USB drive, and click [X] to close application.

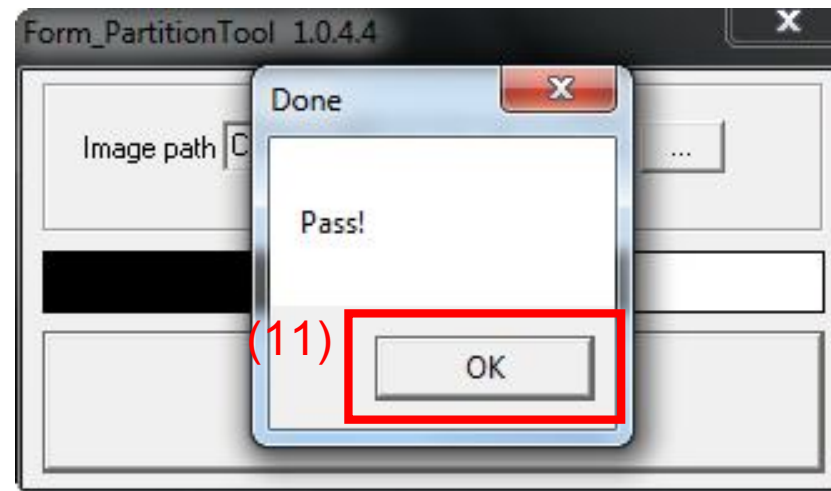


D. Run the AP Tool

(10). Just Click [Auto Run] and go next step.



(11). If Pass, then click [OK] and go to next step.
If fail, then go to page 15 FAQ.

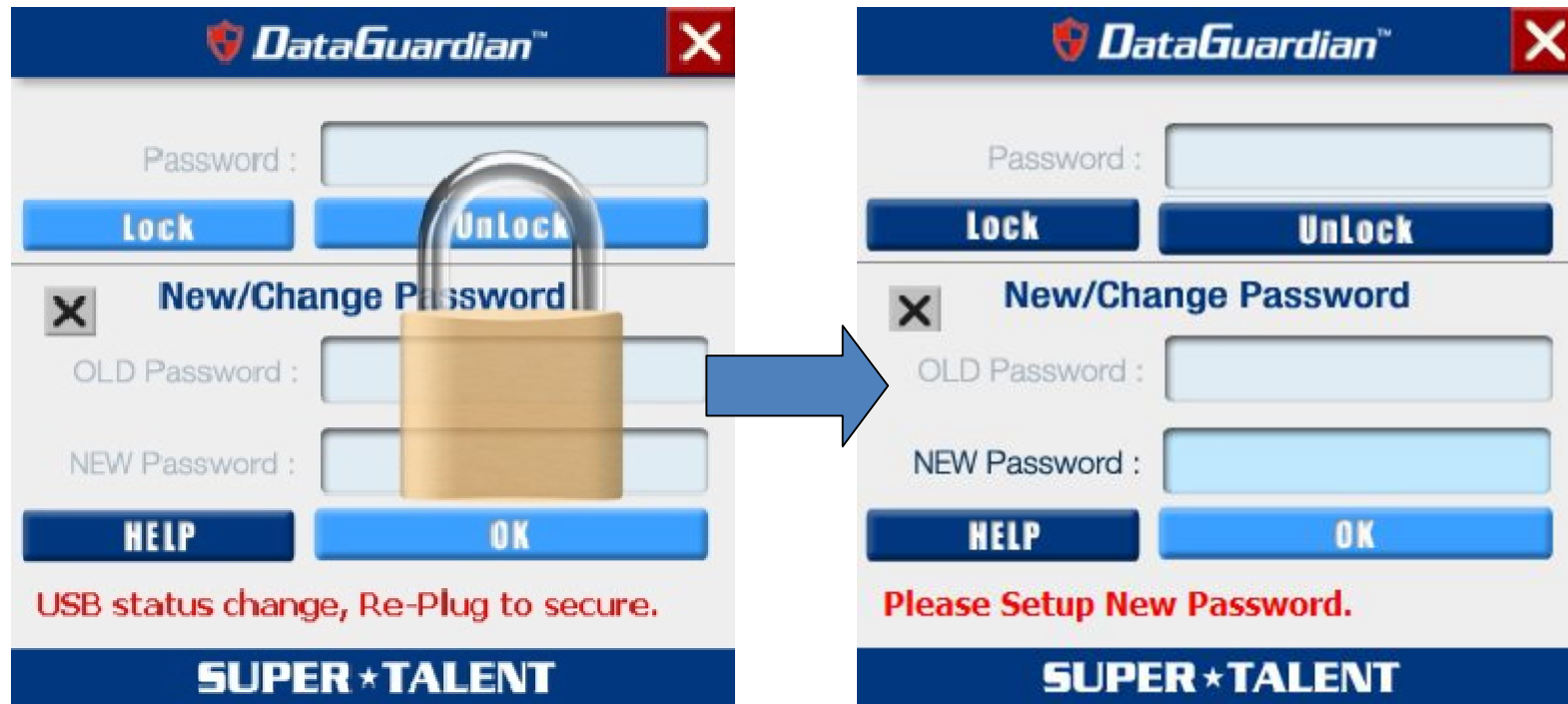


E. Initial Process

- Please re-insert USB drive. The Screen would maybe like below or next step.
- (12). You can switch the AUTOPLAY function on / off.
- Execute USB File, the application would be get first time initial process.

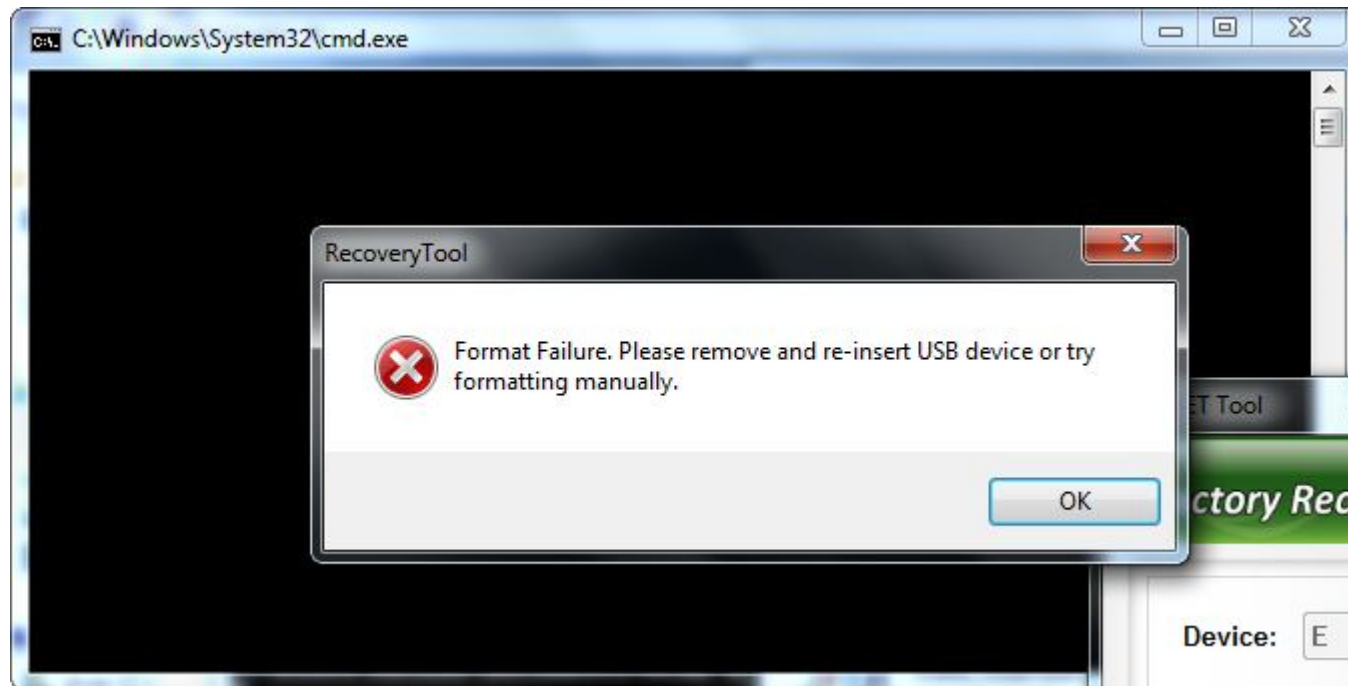


- For Windows XP only, the application initial process would lock drive at first time, like left screen. Just Re-Plug USB drive again, then you can set up new password, like right screen.



FAQ

- If failure, please **reboot** your computer and try standard step again.
- If any question about this manual, please contact support@supertalent.com



SUPER ★ TALENT®
THE BEST MEMORY