

SuperTalent TeraDrive CT3 PT3

Firmware Update Tool User Guide

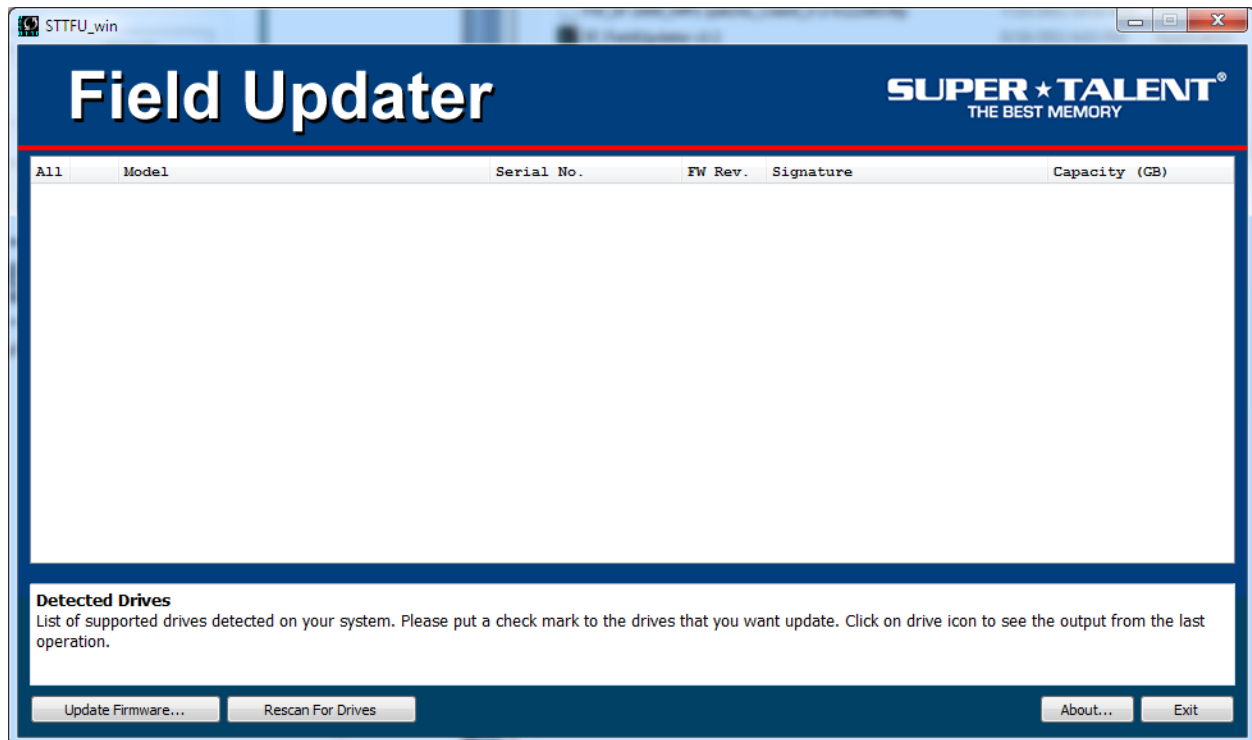
Overview

The SuperTalent TeraDrive CT3 PT3 Update Tool allows users to update firmware on drives operating in a Windows environment. To make a successful update, the following key points must be followed:

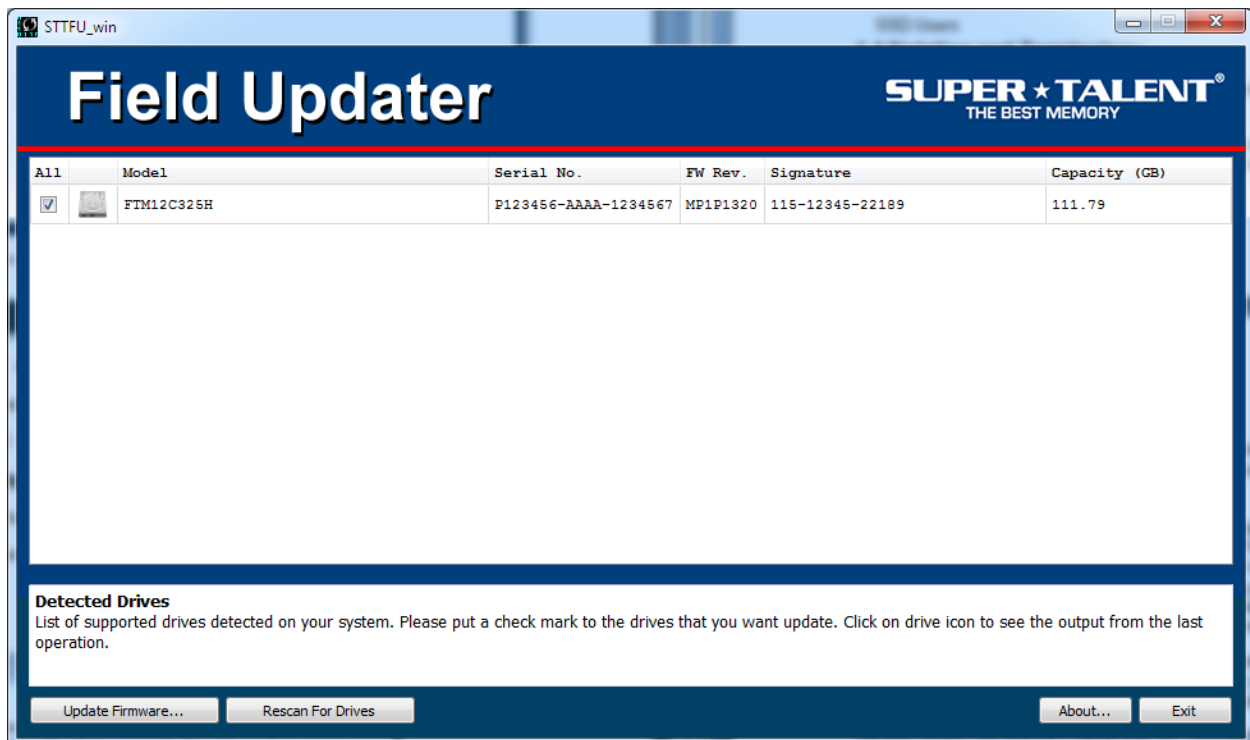
1. This update tool must be run for the TeraDrive which is connected as **secondary drive**. Not system OS drive. OS drive must be different. The tool actually works on OS drive but we recommend using it as Data drive for safety. "Back up the drive".
2. It is required to use the **SATA II** port. Some of latest mother boards have SATA III ports on the boards. Please do not use SATA III ports. (recommendation)
3. **Do not** use any kind of Bridge controller like USB to SATA or IDE to SATA, etc.
4. For Intel's new **Sandy Bridge motherboard** users. Please **update the mother board BIOS** before update the drive. Otherwise the tool will not work.
5. This FW Update program works **only on AHCI** mode. Make sure you have AHCI setup in BIOS.

Using the Update Tool

On launch, the Update Tool will scan for drives. **IMPORTANT: The Update Tool requires administrator privileges.** No drives will be discovered if administrator privileges are not enabled. All discovered drives will be displayed in the drive list with a checkbox. The drive to be updated must be checked. Only one drive should be selected at a time.

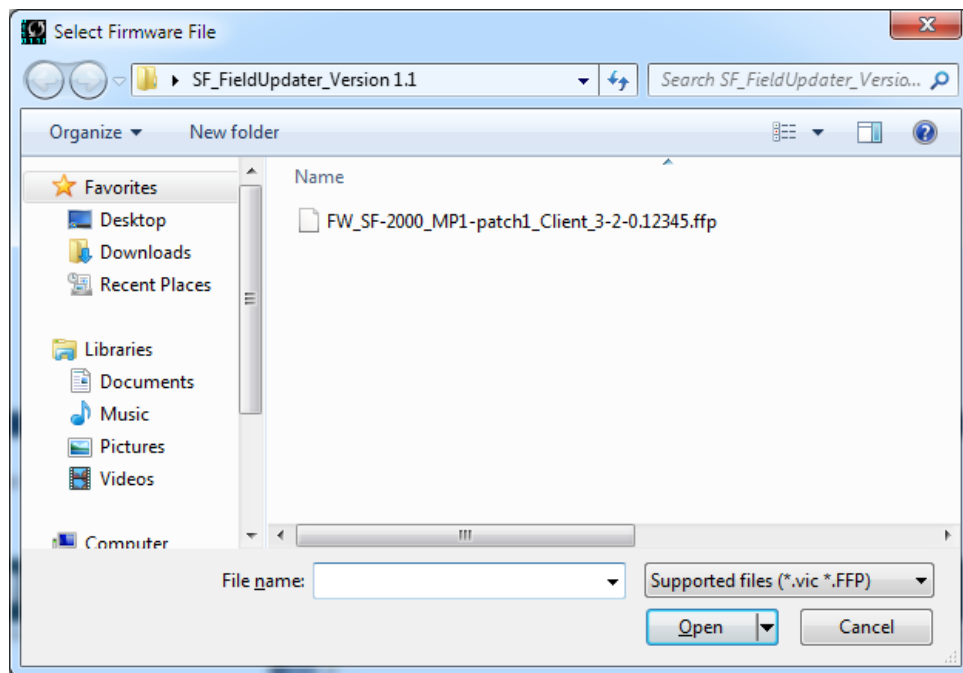


No Drives Found Drives Found

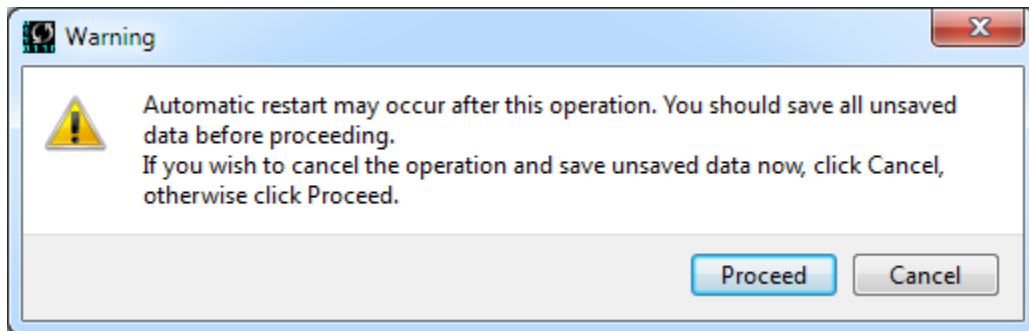


A drive found and selected

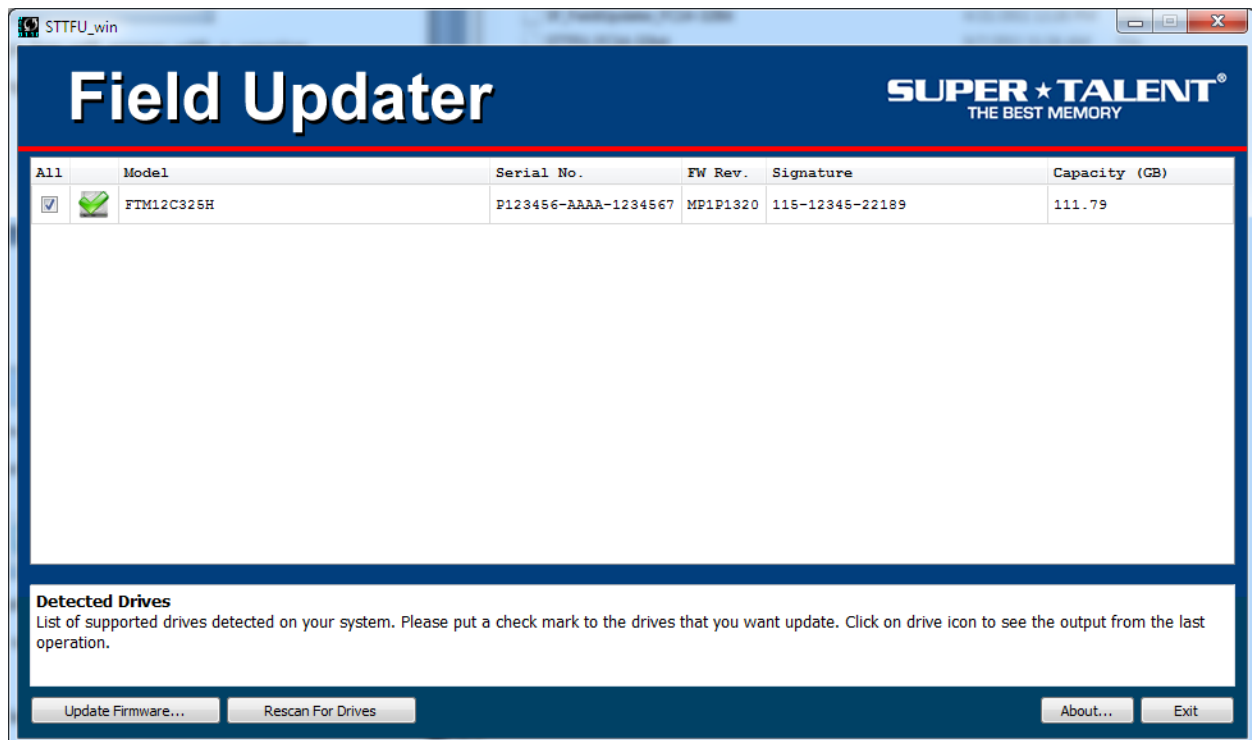
Once the target drive has been selected, click "Update Firmware..." the following window will pop up.



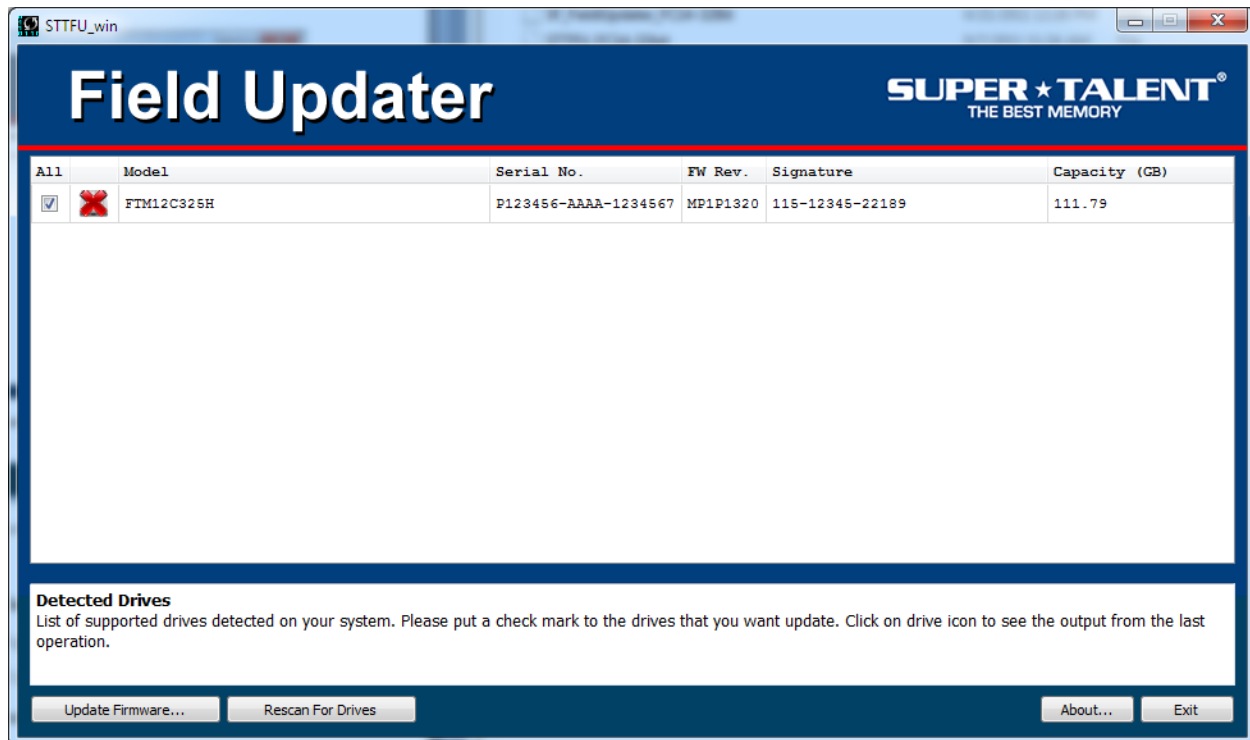
Select the ffp file in the folder and click open. A message box will appear with a warning indicating you **the system will be automatically restarted following the download** and must save all important data before proceeding to prevent loss of data.



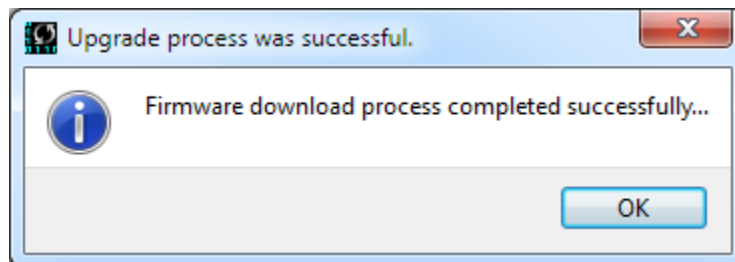
Once you saved the data, click "Proceed" to continue the update process for the select drive. It will take about 30 sec to 1 min to update a drive. Once the update has completed successfully, Icon show a check mark indicating the operation success.



However if the process failed for some reason, you will see a red "X" next to the failed drive.



Whether the update process has successfully or failed, more detailed information can be get by click the drive icon. A successful update will show



A failed may show

